

Features:

- Sizes 8" thru 32" square (Even Sizes)
- Heavy duty, high duty cycle design
- Flush blade seal; Low leakage
- Pneumatic cylinder actuated & externally mounted bearings
- Visual flag for blade position indication
- Removable access panel for maintenance
- 15" W.G. (-3.74 k pa)
- Design Rating
- Mountable in any position

Power Requirements:

- 24V Standard
- 70 PSI compressed air supply

Industries:

Textiles, paper, tobacco, wood, plastics, agricultural & rubber dust applications.

Available Services:

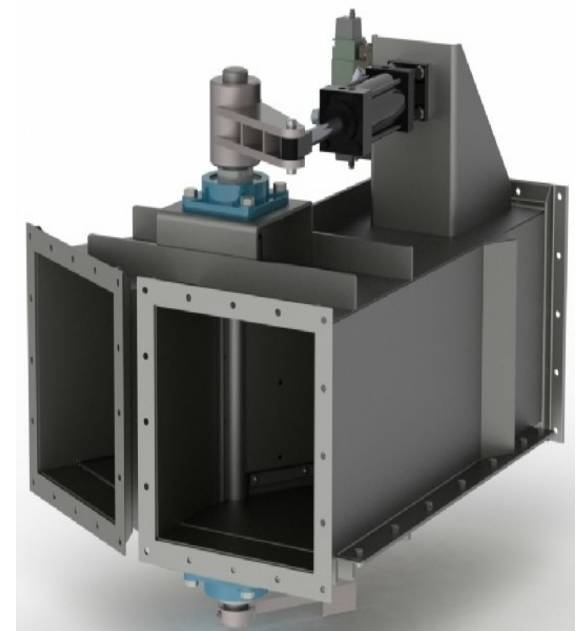
- System Integration
- Industrial Ventilation
- Material Handling
- Power & Controls
- Manufacturing

Product Description:

ATMOS360 Diverters are designed to handle applications where there is dust or fiber loading in the air stream. The pneumatic actuator provides full stroke blade positioning, diverting air from one side to the other. Typical applications include diverting air from on-line hoods to an air bleed to maintain conveying velocity in the duct network in the event of a sheet break or thread-up operation.

Heavy duty galvanized steel construction with air cylinder actuated gate. Polyurethane seals with a 40 durometer rating. Mountable in either horizontal or vertical orientation. Standard unit is provided with a 24V solenoid and adjustable air cylinder flow control valves.

Optional inlet transitions and air bleed screens can be provided upon request.



AIR SYSTEM DIVERTER VALVES

**64 CIRCLE FREEWAY DR
CINCINNATI, OH 45246**

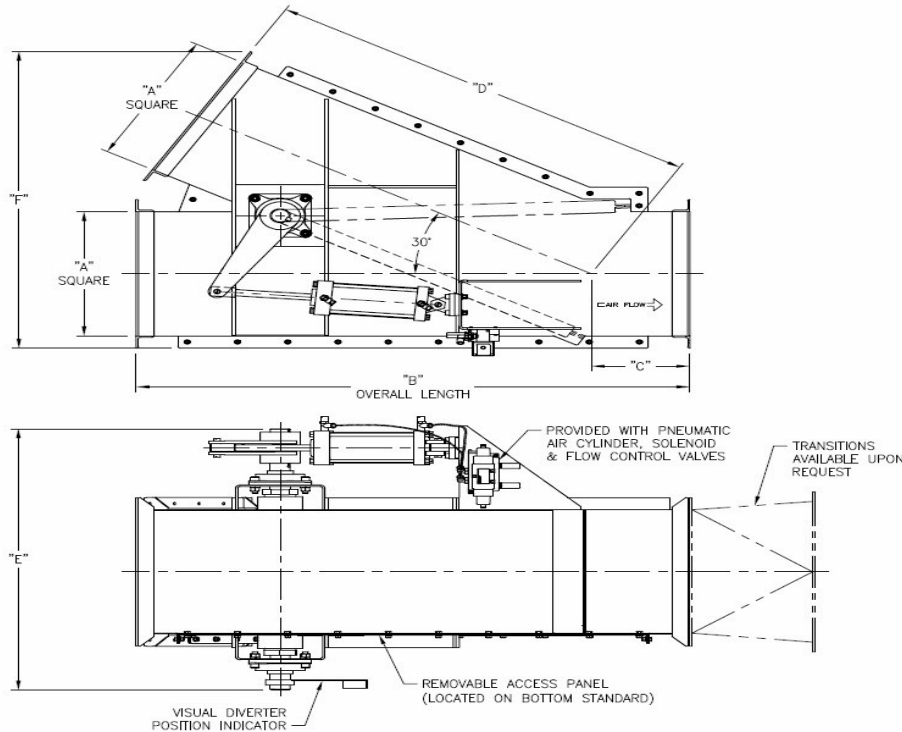
www.atmos360.com

Phone: 513-330-5442

E-mail: info@atmos360.com

Automatic Air Diverter Valve Models

| MODEL | A | B | C | D | E | F | WEIGHT |
|--------|-----|---------|---------|---------|---------|---------|-----------|
| 510060 | 8" | 28-1/2" | 6-1/4" | 22-1/4" | 24-7/8" | 22-3/4" | 150 LBS |
| 510061 | 10" | 34" | 6-1/2" | 27-1/2" | 27-7/8" | 26-3/8" | 215 LBS |
| 510062 | 12" | 40" | 6-1/2" | 34-1/8" | 29-7/8" | 31" | 280 LBS |
| 510001 | 14" | 42" | 7" | 34-7/8" | 34-3/8" | 33-7/8" | 395 LBS |
| 510063 | 16" | 45-3/4" | 7" | 38-5/8" | 38-1/2" | 37-3/4" | 505 LBS |
| 510064 | 18" | 58-1/2" | 7-5/8" | 50-5/8" | 38-1/2" | 37-3/4" | 600 LBS |
| 510065 | 20" | 62" | 10-12" | 51-1/2" | 39-5/8" | 48-1/4" | 710 LBS |
| 510066 | 22" | 65-3/4" | 11" | 55" | 44" | 48-7/8" | 790 LBS |
| 510067 | 24" | 70-1/2" | 11" | 60" | 46" | 56" | 870 LBS |
| 510068 | 26" | 72-1/2" | 11" | 62-3/4" | 49" | 60" | 1,100 LBS |
| 510069 | 28" | 78-1/4" | 11" | 68-1/4" | 51" | 64-5/8" | 1,200 LBS |
| 510070 | 30" | 84" | 11-1/4" | 72-1/2" | 54-1/2" | 69" | 1,300 LBS |
| 510071 | 32" | 91-5/8" | 14-3/4" | 77" | 55" | 72-1/2" | 1,408 LBS |



Replacement Parts

| PART NUMBER | DESCRIPTION |
|-------------|---------------------------|
| 510983 | 8 x 8 DIVERTER SEAL KIT |
| 510984 | 10 x 10 DIVERTER SEAL KIT |
| 510985 | 12 x 12 DIVERTER SEAL KIT |
| 510986 | 14 x 14 DIVERTER SEAL KIT |
| 510987 | 16 x 16 DIVERTER SEAL KIT |
| 510988 | 18 x 18 DIVERTER SEAL KIT |
| 510989 | 20 x 20 DIVERTER SEAL KIT |
| 510990 | 22 x 22 DIVERTER SEAL KIT |
| 510991 | 24 x 24 DIVERTER SEAL KIT |
| 510992 | 26 x 26 DIVERTER SEAL KIT |
| 510993 | 28 x 28 DIVERTER SEAL KIT |
| 510994 | 30 x 30 DIVERTER SEAL KIT |

ATMOS360, Inc
 64 Circle Freeway Dr
 Cincinnati, OH 45246
 Phone: (513) 330-5442